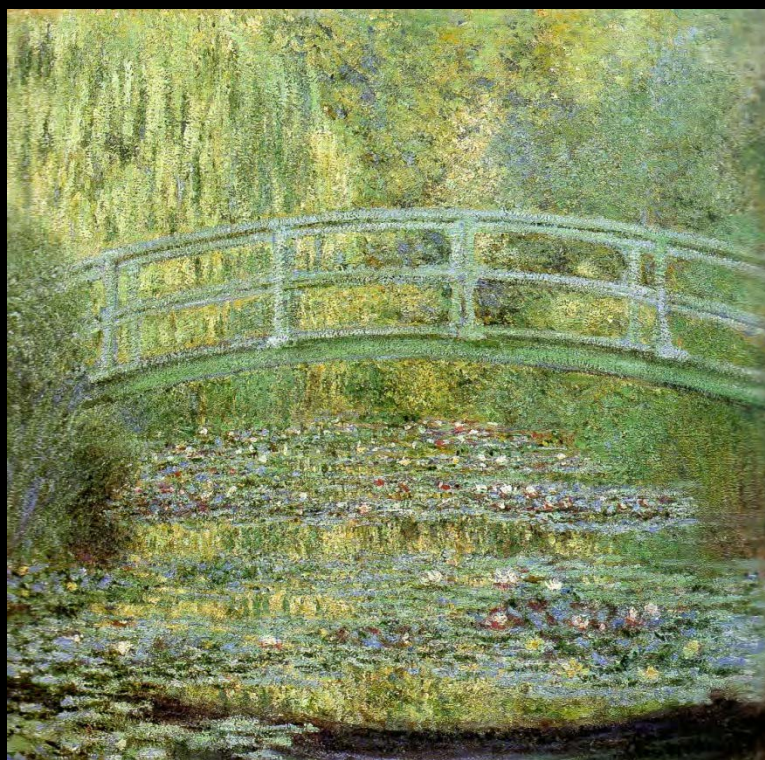


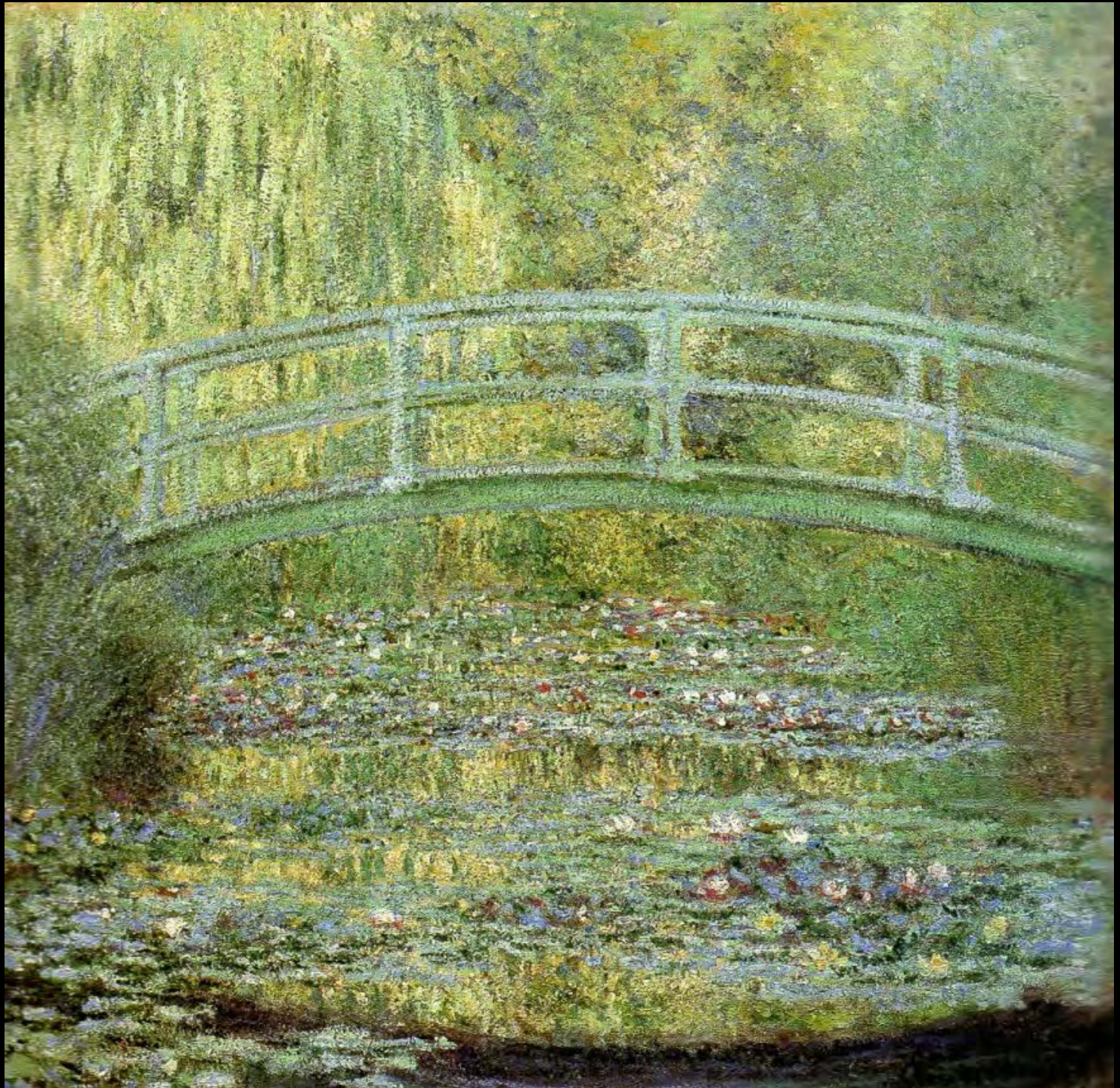
Claude Monet – 1840-1926

A Ponte Japonesa, 1899 – Coleção Particular, Japão



BIBLIOGRAFIA

- BORTOLATTO, Lugina Rossi. *L'opera completa di Claude Monet*. Milano, Ed: Rizzoli, 1978
- CANTZ, Hatje. *Monet's Garden*. Zürich, Ed: Hatje Cantz, 2005.
- CHARPIER Jacques; SEGHERS, Pierre. *L'art de la peinture*. Paris, Ed: Séghers, 1957.
- CLARK, T. J. *A pintura da vida moderna*. São Paulo, Ed: Companhia das Letras, 2004.
- GORDON, Robert; FORGE, Andrew. *Monet*. Paris, Ed: Flammarion, 1984.
- REWALD, John. *História do Impressionismo*. São Paulo, Ed: Martins Fontes, 1991.
- ROSENBLUM, Robert; et. al. *1900: Art at the crossroads*. New York, Ed: Harry N. Abrams, 2000.
- SPROCCATI, Sandro. *Monet: Sa vie, son oeuvre*. Paris, Ed: Gründ, 1992.
- ZOLA, Émile. *A Batalha do Impressionismo*. São Paulo, Ed: Paz e Terra, 1989.
- WILDENSTEIN, Daniel. *Monet: or The triumph of Impressionism*. Ed: Taschen, 1996.
- WILDENSTEIN, Daniel. *Monet: Catalogue Raisonné. 4VOLS*. Ed: Taschen/Wildenstein Institute, 1996.



“Depois das flores artificiais a imitar as verdadeiras, queria flores naturais que imitassem as falsas” .

Às avessas. J-K Huysmans



*Le Bassin aux
nymphéas* - Art
Museum, Pinceton
University - New
Jersey, 1899



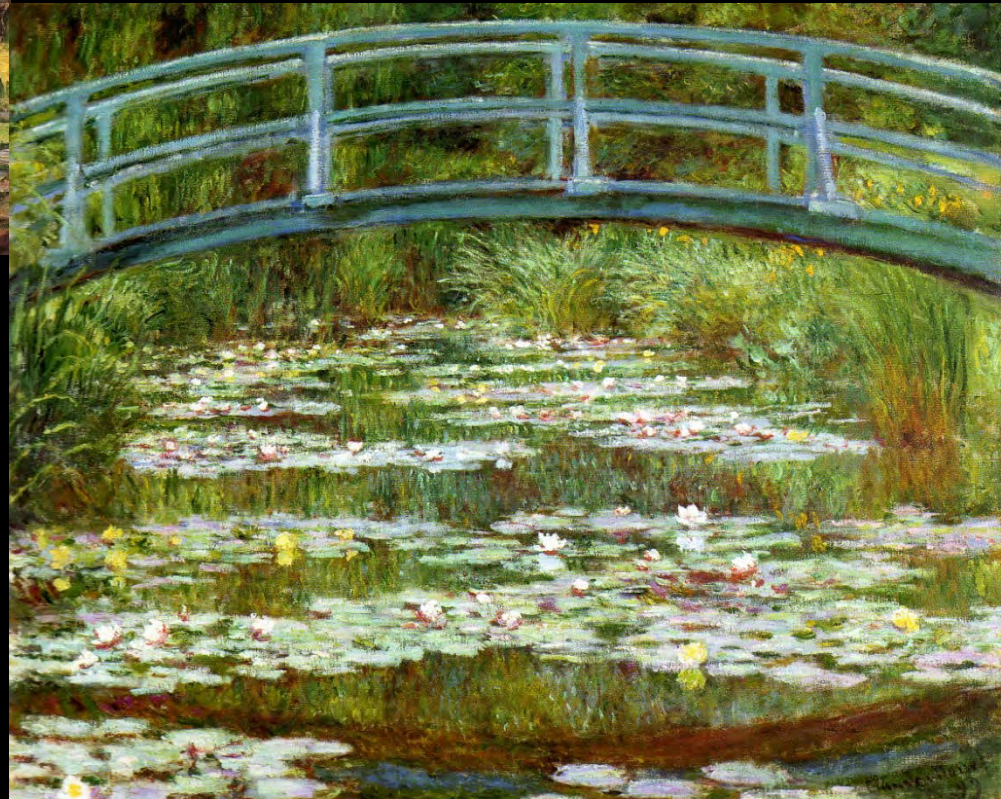
Le Bassin aux nymphéas - Art Museum, Gallery of Fine Arts, Columbus, 1899



Le Bassin aux nymphéas – Metropolitan Museum, New York 1899

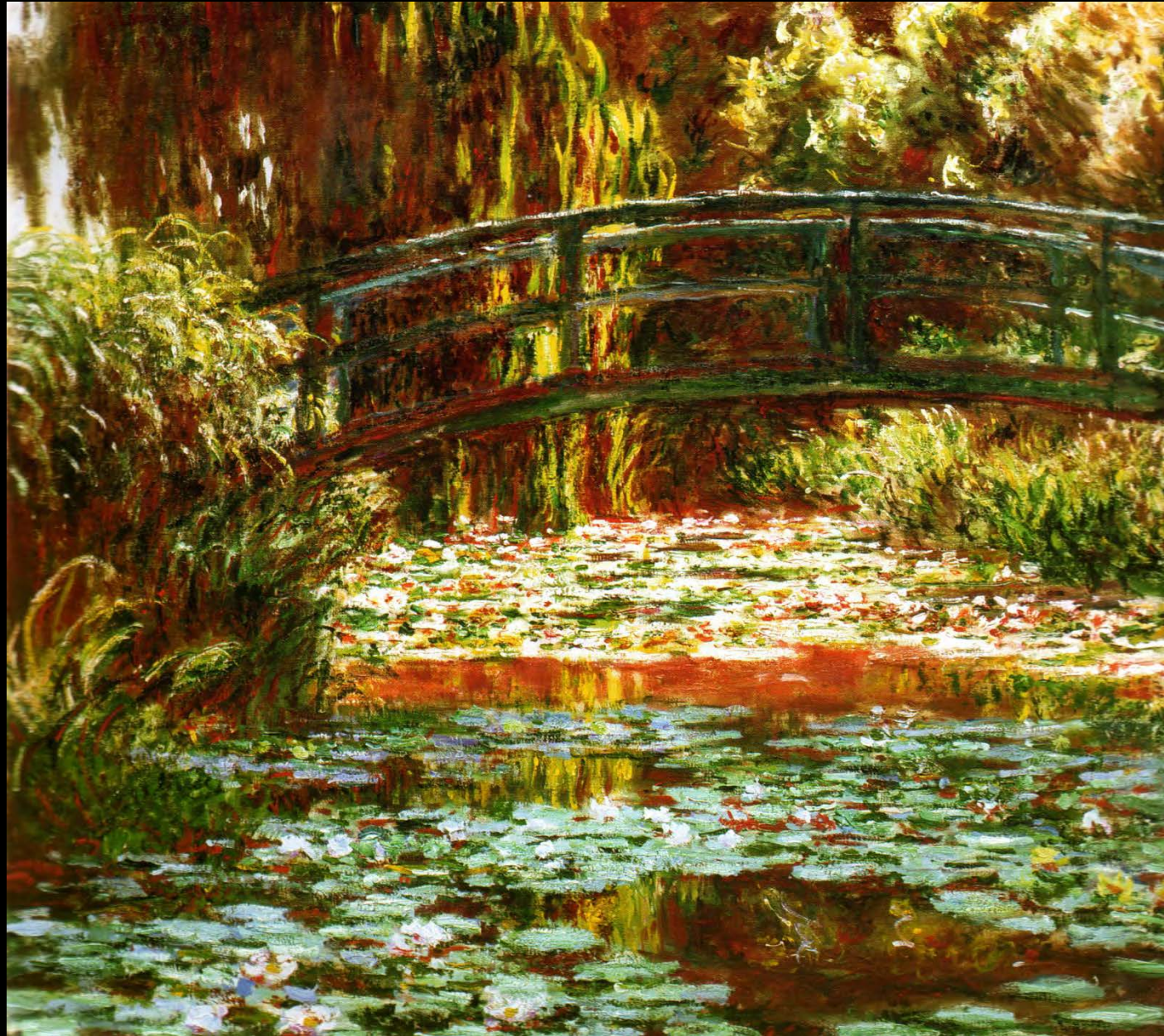


Le Bassin aux nymphéas – National
Gallery of Art, Washington, DC, 1899



Le Bassin aux nymphéas - Museu Pouchkine,
Moscou, 1899

*Le pont sur le bassin
aux nymphéas, Giverny*
- Art Institute of
Chicago, 1900

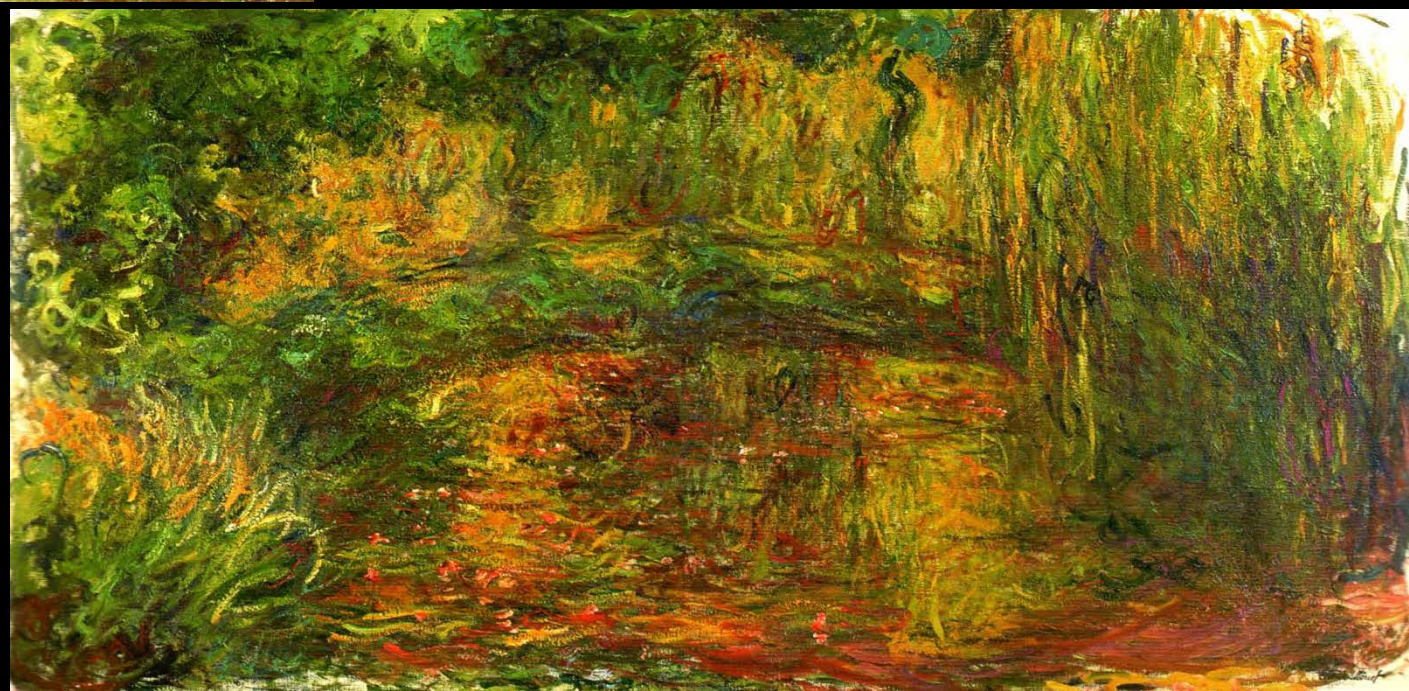




*Les Nymphéas, paysage
d'eau, 1905*



*Le Pont Japonais -
Musée Marmottan, 1913*

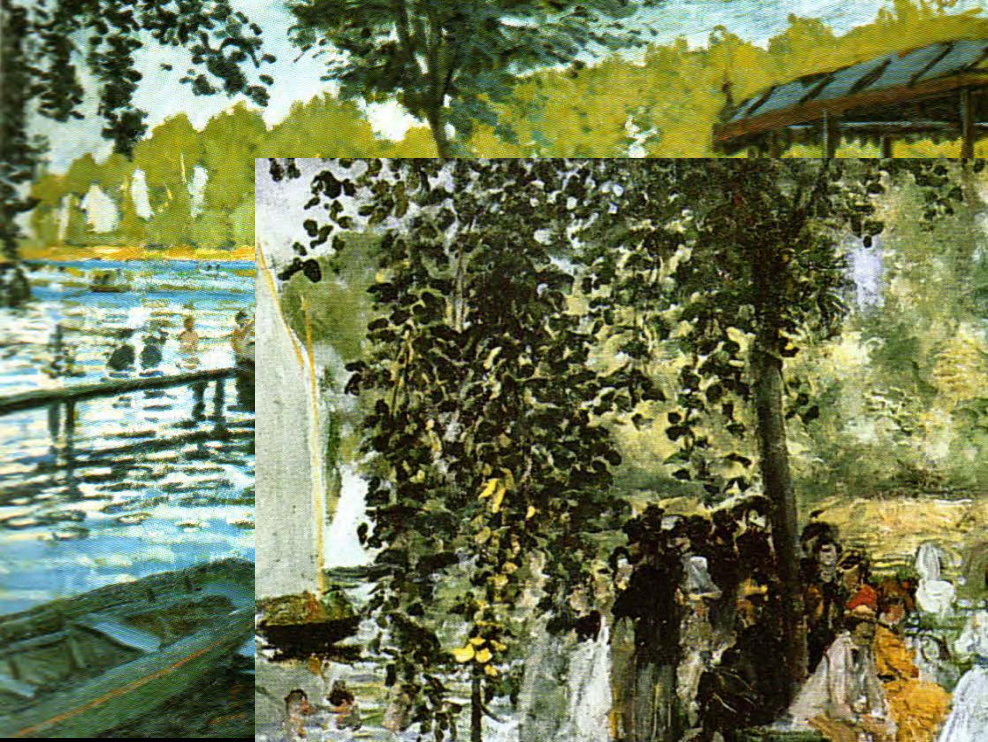




Le Pont Japonais
Musée Marmottan, 1911



Halage d'un bateau, Honfleur, 1864



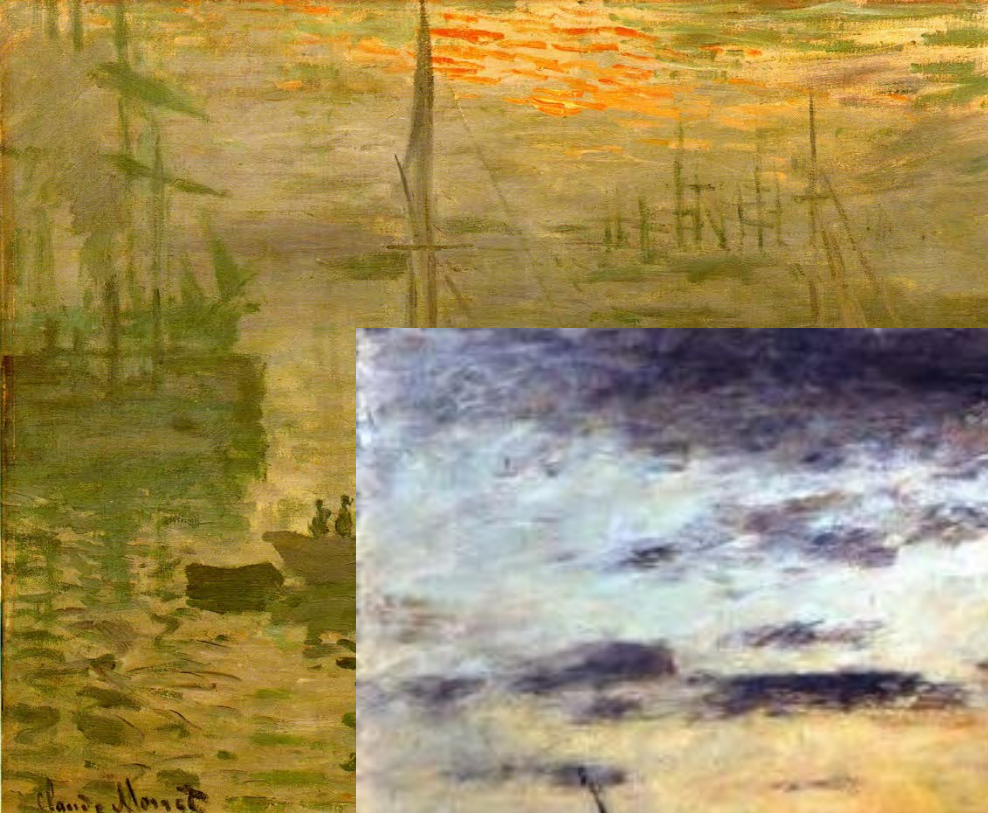
Le Grenou



uillère, 1869



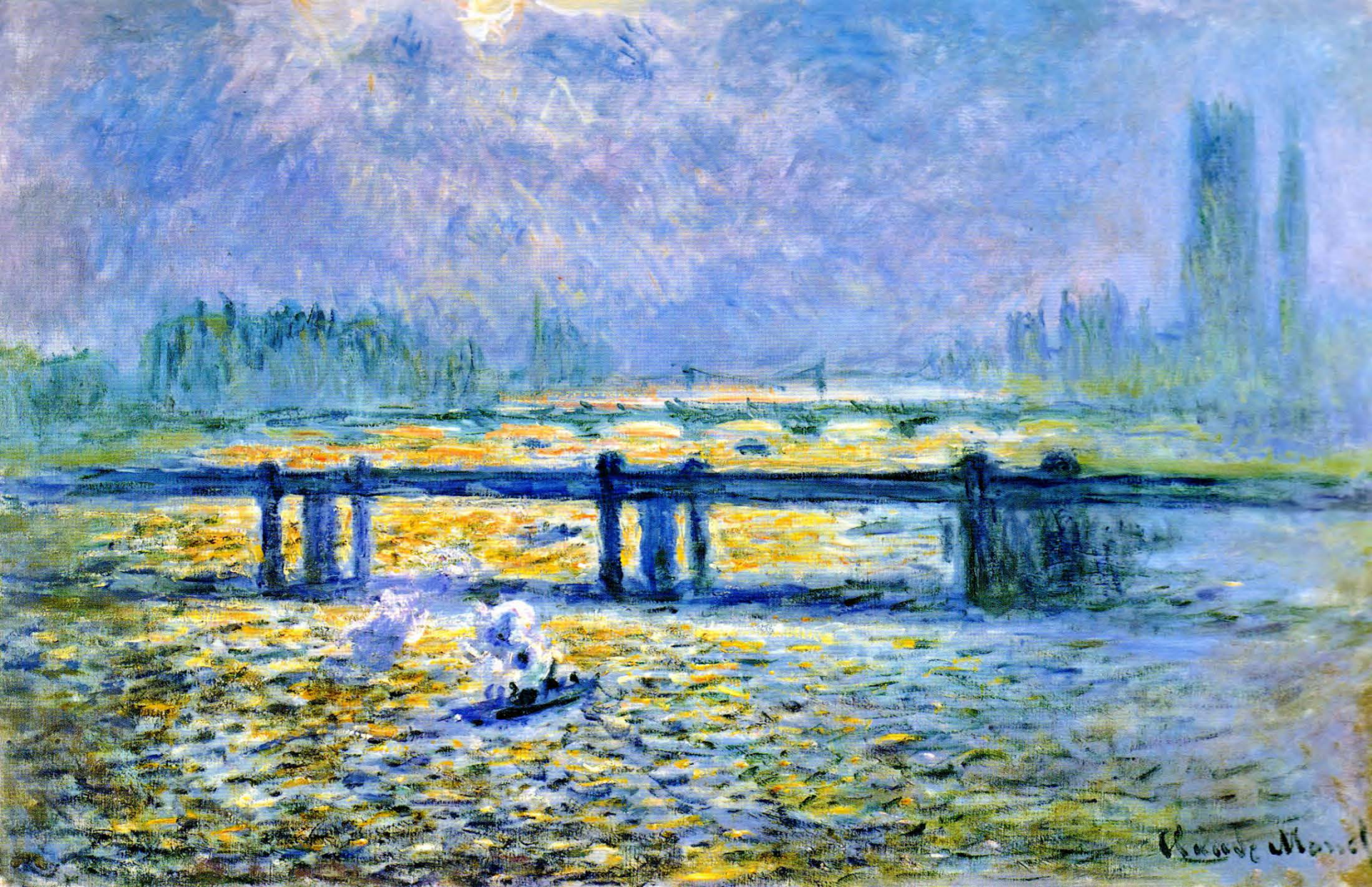
Pierre Auguste Renoir, *La Grenouillère, 1869*



Soleil Levant, ma

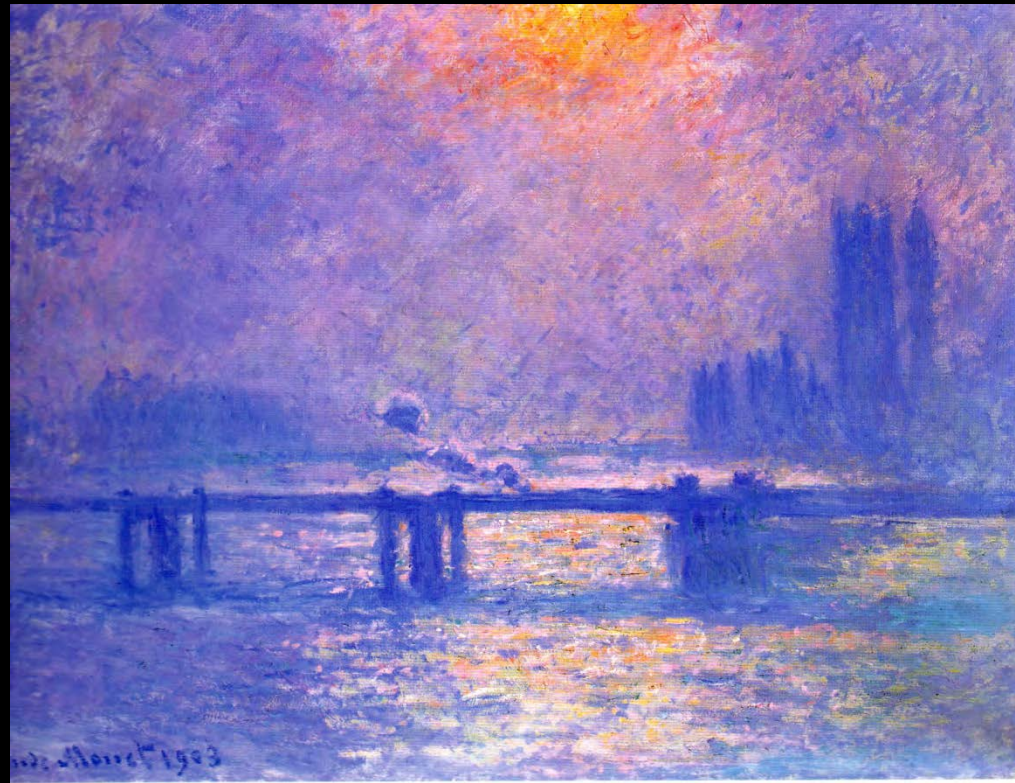
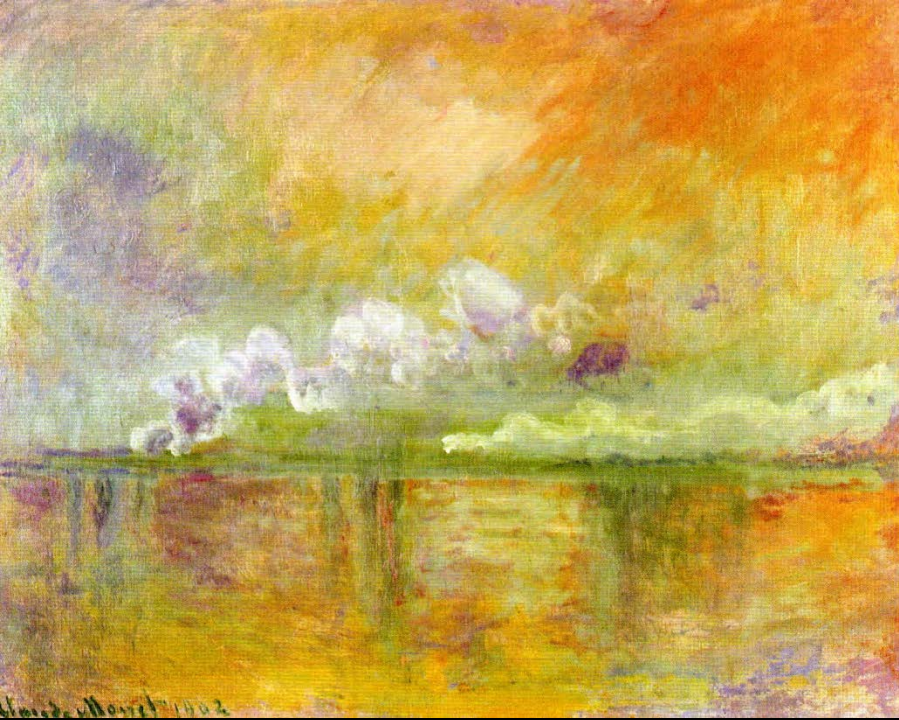
Eugène Boudin. Le Havre, 1889

Impression, soleil levant, 1872



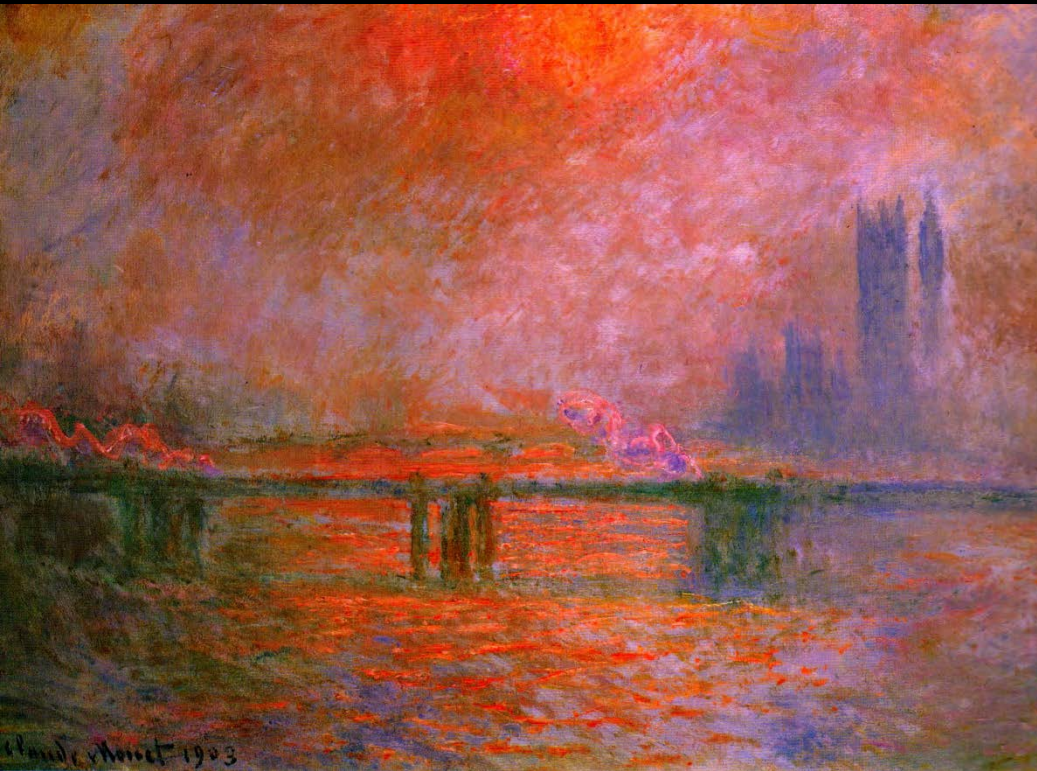
Charing Cross Bridge, reflets sur la Tamise -
The Baltimore Museum of Art, 1899-1901

*Charing Cross Bridge, fumée dans brouillard,
impression - Musée Mormattan, 1902*



*Charing Cross Bridge, la tamise - Musée de
Beaux-Arts, Lyon, 1903*

*Charing Cross Bridge, passage de trains -
Coleção Privada, Japão, 1904*



*Charing Cross Bridge, la Tamise - Yamagata
Museum of Art, Japon, 1903*



Conrad Felixmüller. *Vista noturna de alto-forno*, 1927



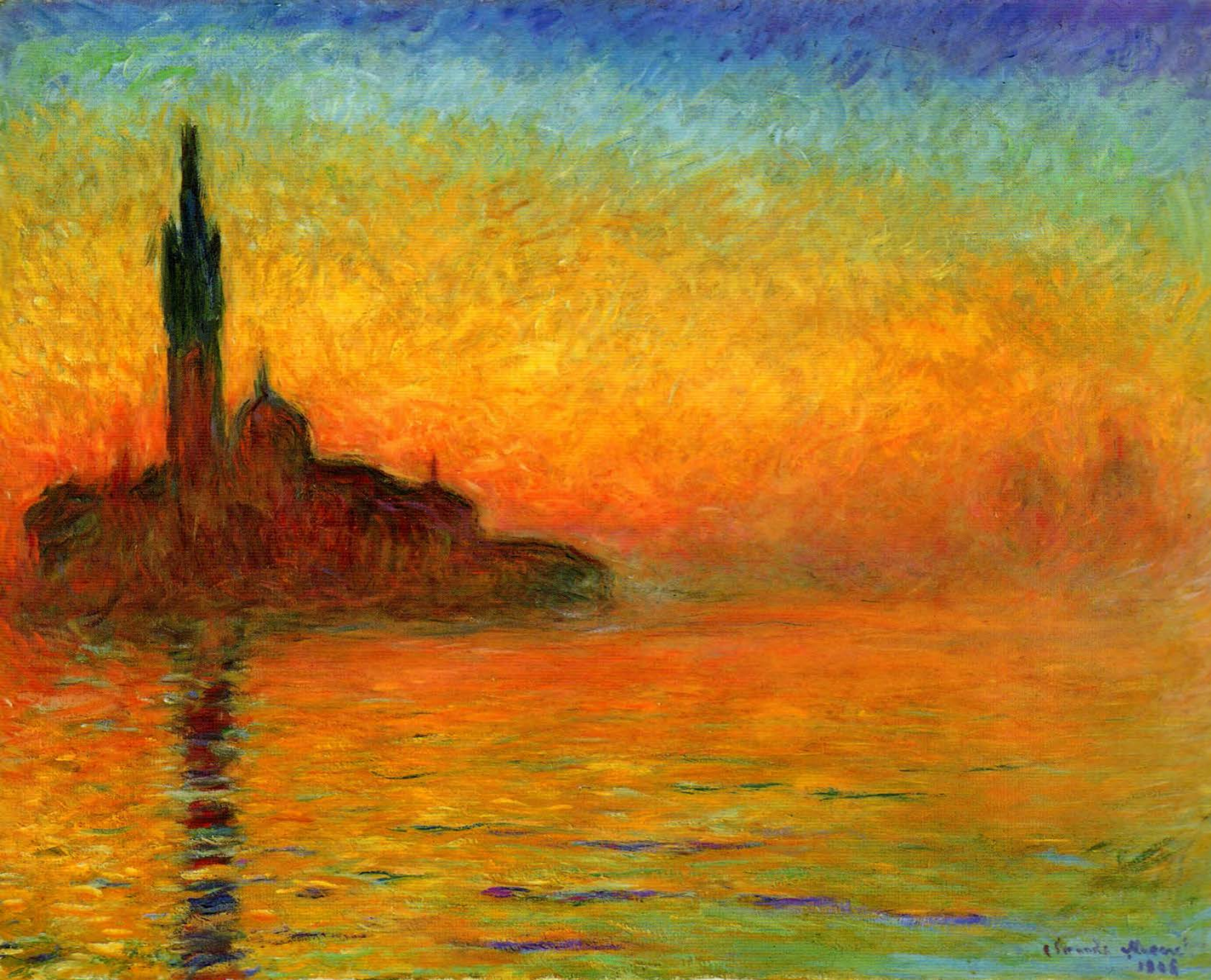
*Le Parlement, ciel
orageux - Musée
de Beaux-Arts,
Lille ,1904*



*Le Parlement, trouée de soleil
dans le brouillard - Musée
d'Orsay, 1904*

Le Parlement, choucher de soleil, 1904





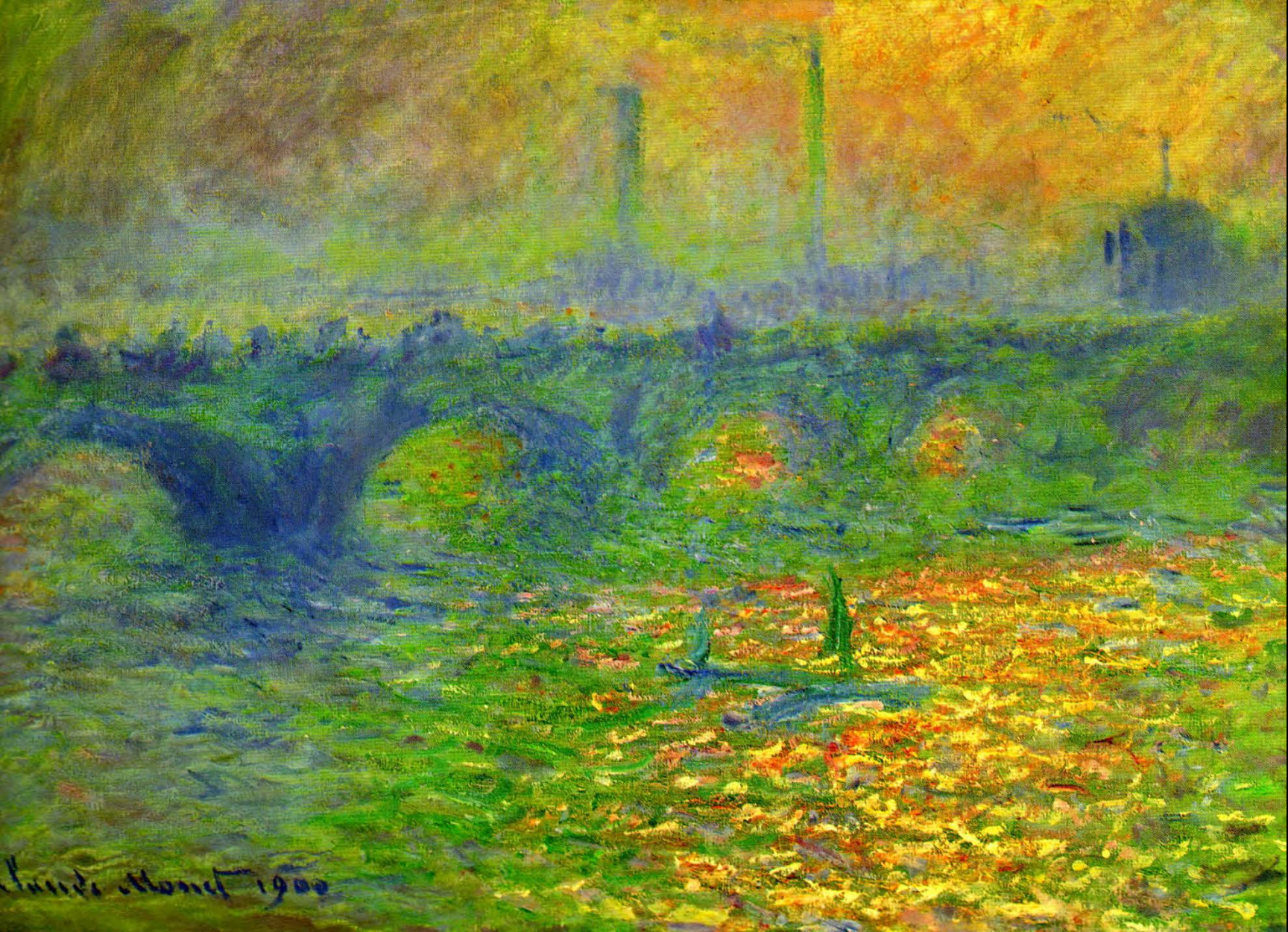
Crépuscule à Venise - Bridgestone Museum of Art, 1908



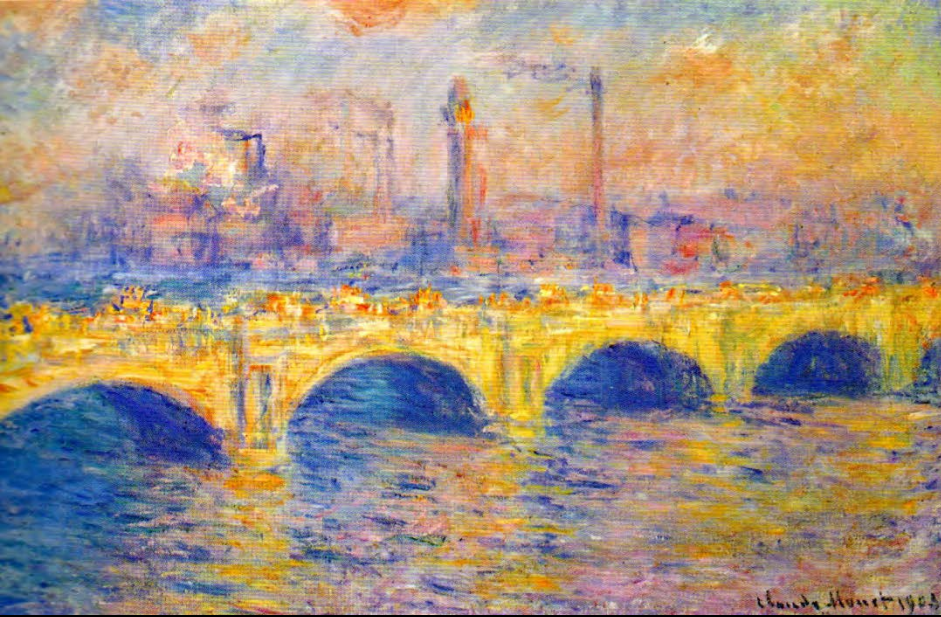
William Turner, *O incêndio no Parlamento, 16 de outubro de 1834*, 1835



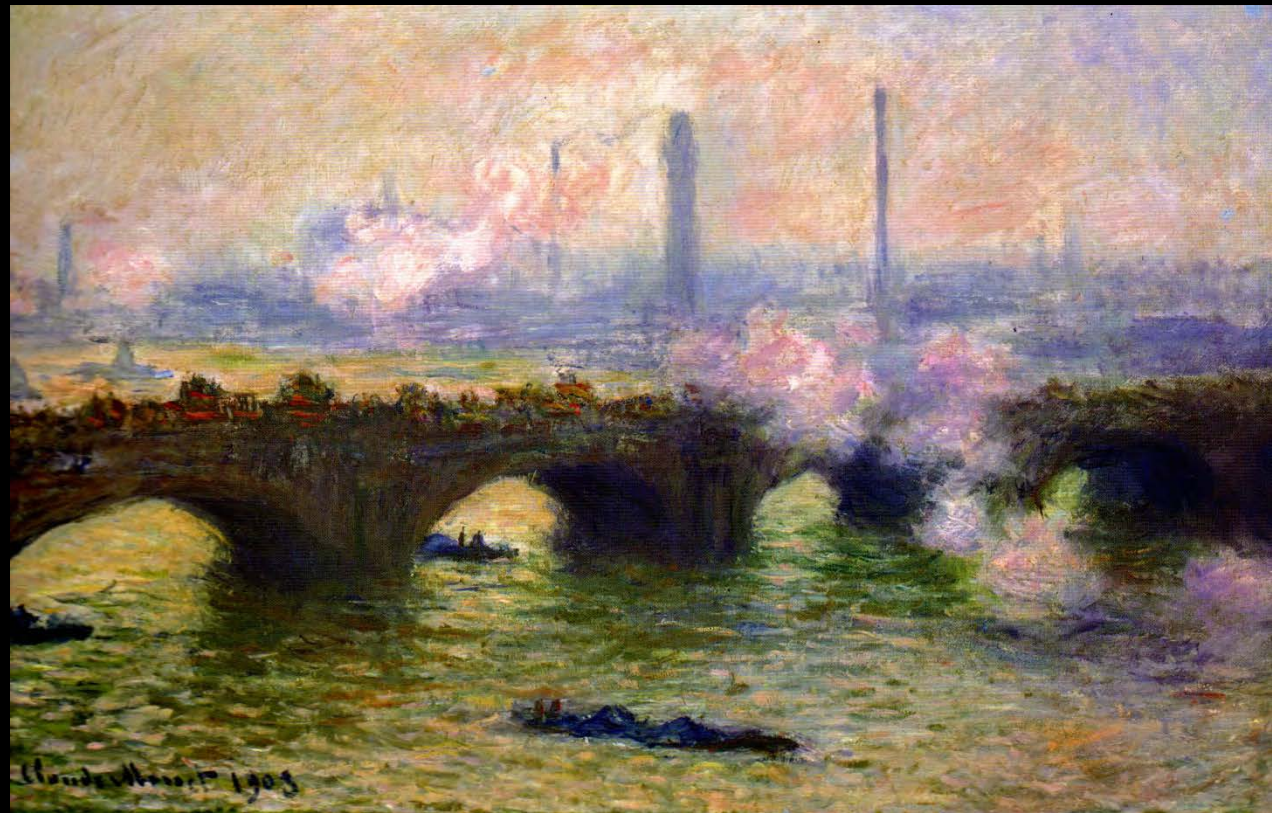
Paul Chabas, *A banhista*, 1910c



Londres Waterloo Bridge - Santa Barbara Museum of Art, 1900



*Londres Waterloo Bridge - Museum of Art,
Pennsylvania, 1903*



*Londres Waterloo Bridge –
temps gris, 1903*



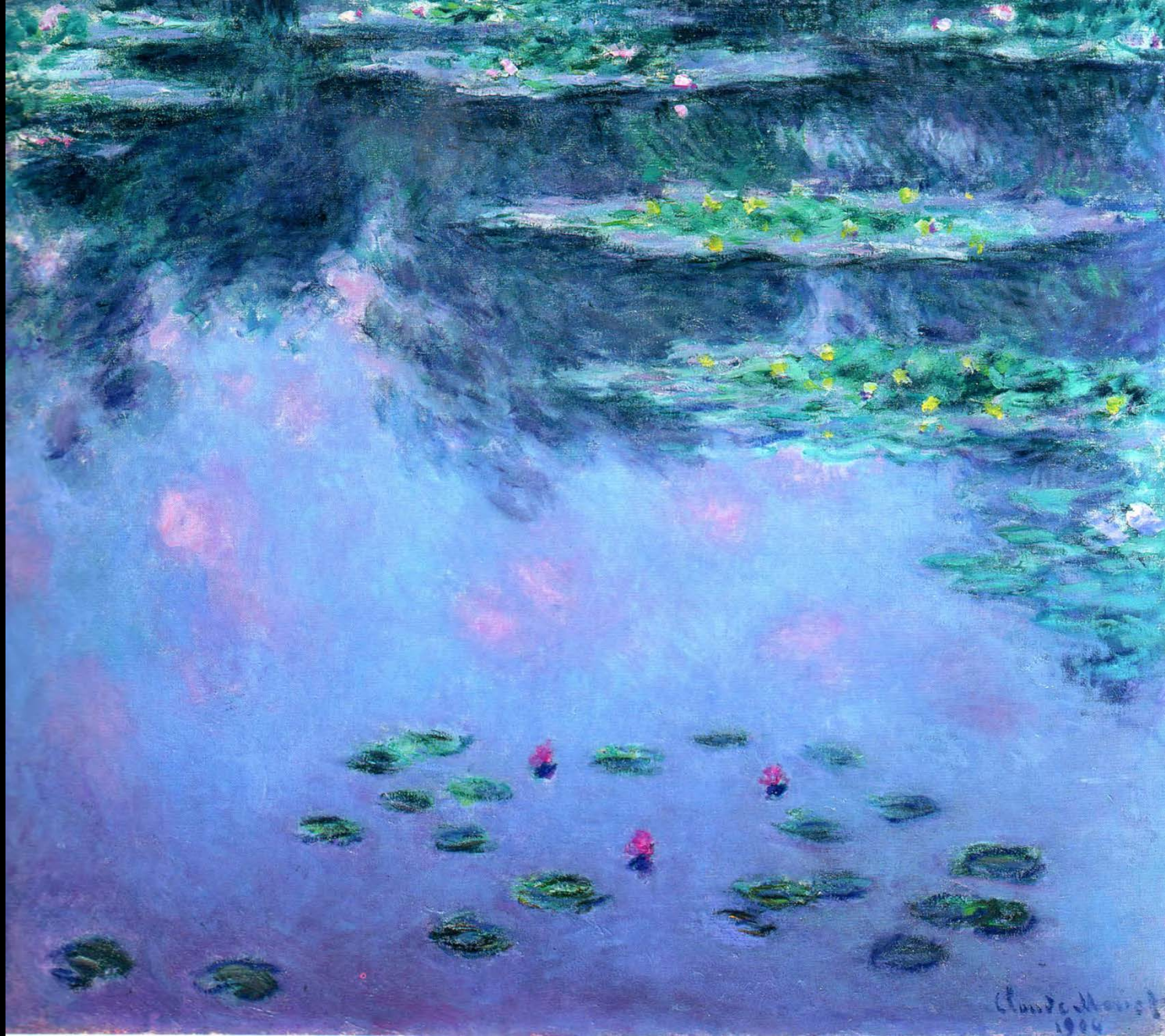
van Gogh, *A noite estrelada*, 1888



Emil Nolde – Mar outono , 1910



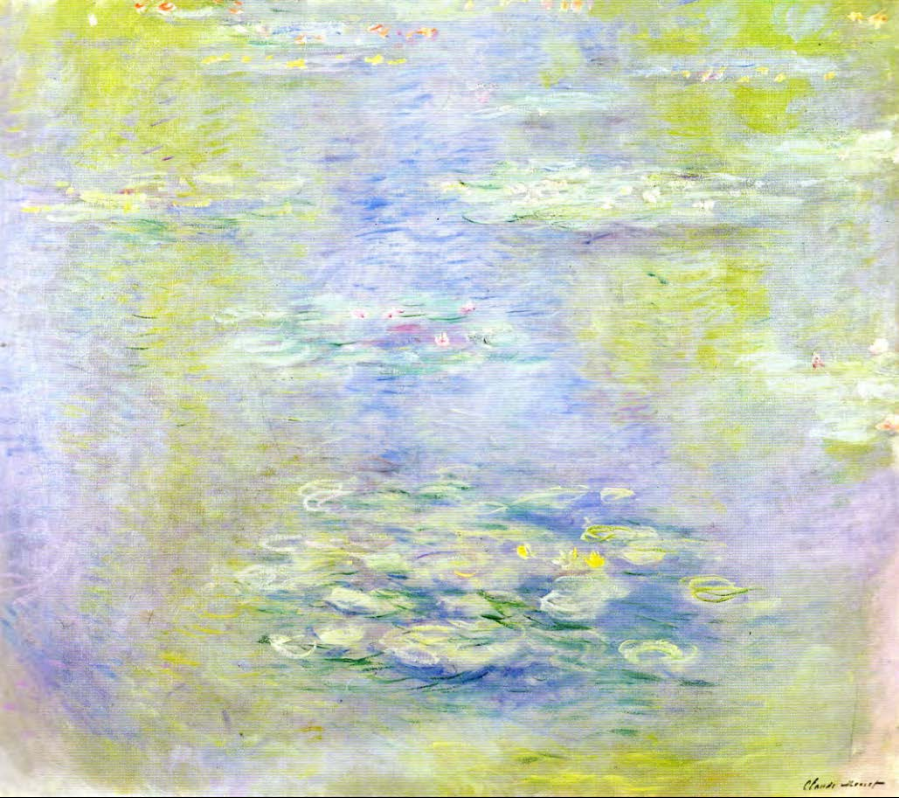
August Strindberg - August the town - 1903



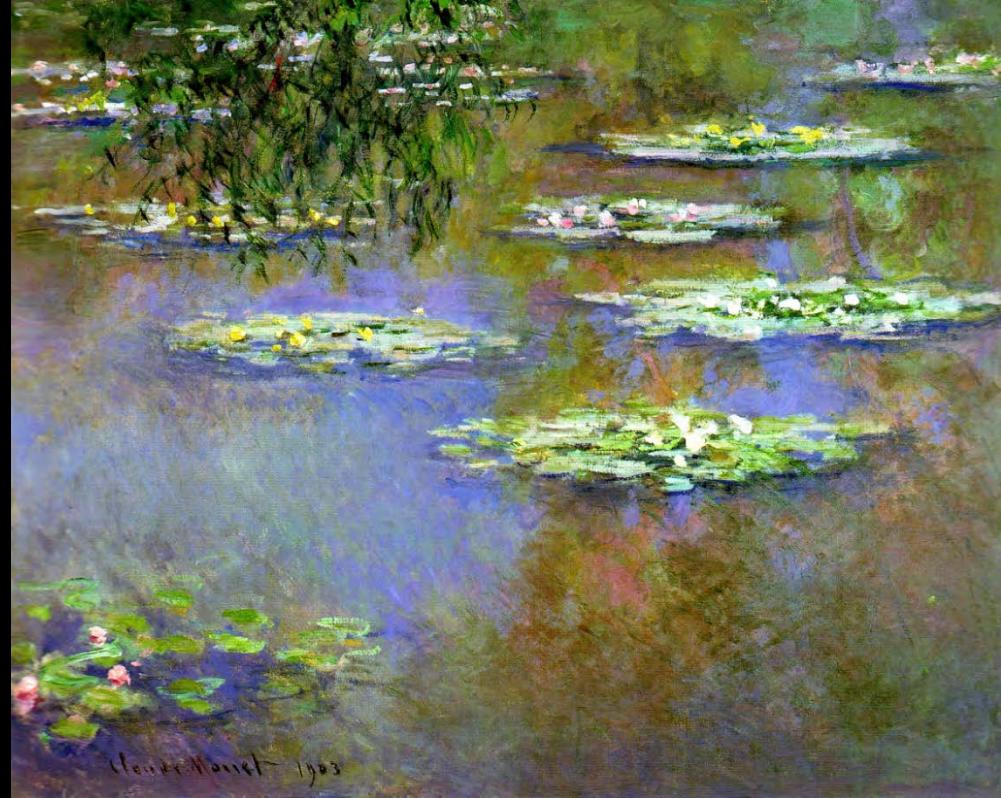
Nymphéas - Coleção Particular – EUA, 1906



Nymphéas - Dallas
Museum of Arts, Texas,
1908



Nymphéas – Musée Marmottan, 1903



Nymphéas – Dayton Art Institute – Ohio, 1903



Alyssa Monks. *Tug of War*, 2007



Le Port de havre, effet de nuit, 1873



William Turner, *Paz, enterro no mar*, 1842



Camille Monet sur son lit de mort, 1879



Flavio de Carvalho, série trágica, 1947

John Constable. *Velho Sarum*,
1834



Johann-Barthold Jongkind. *A praia em Sainte-Adresse*, 1863

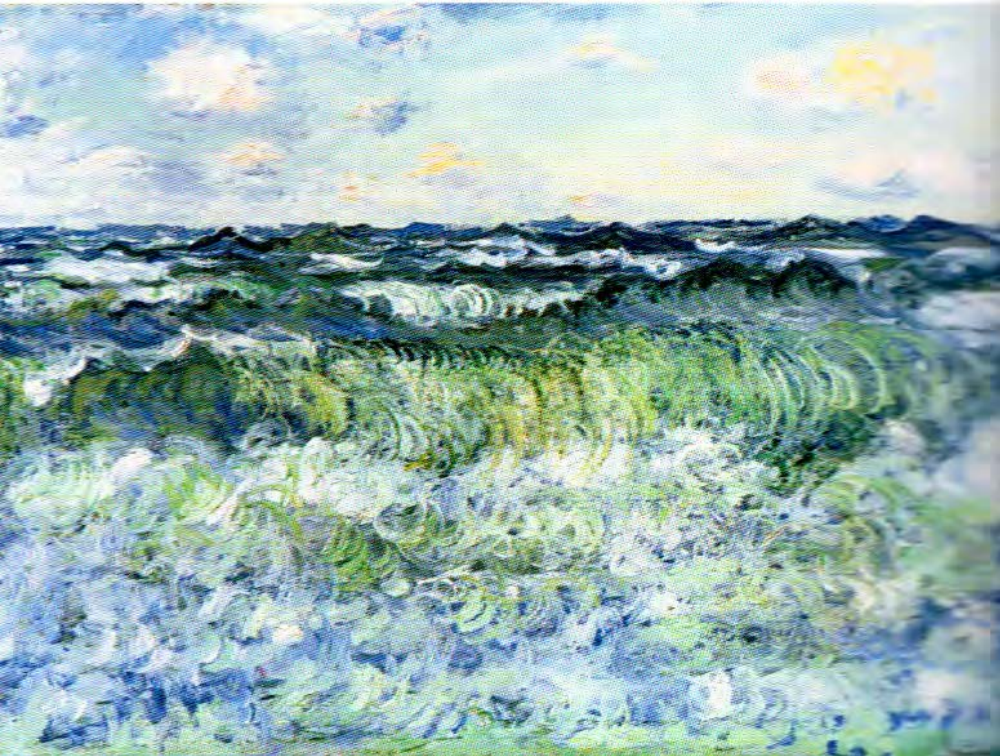




Boulevard des Capucines, 1873



La Gare Saint-Lazare, arrivée d'un train, 1877

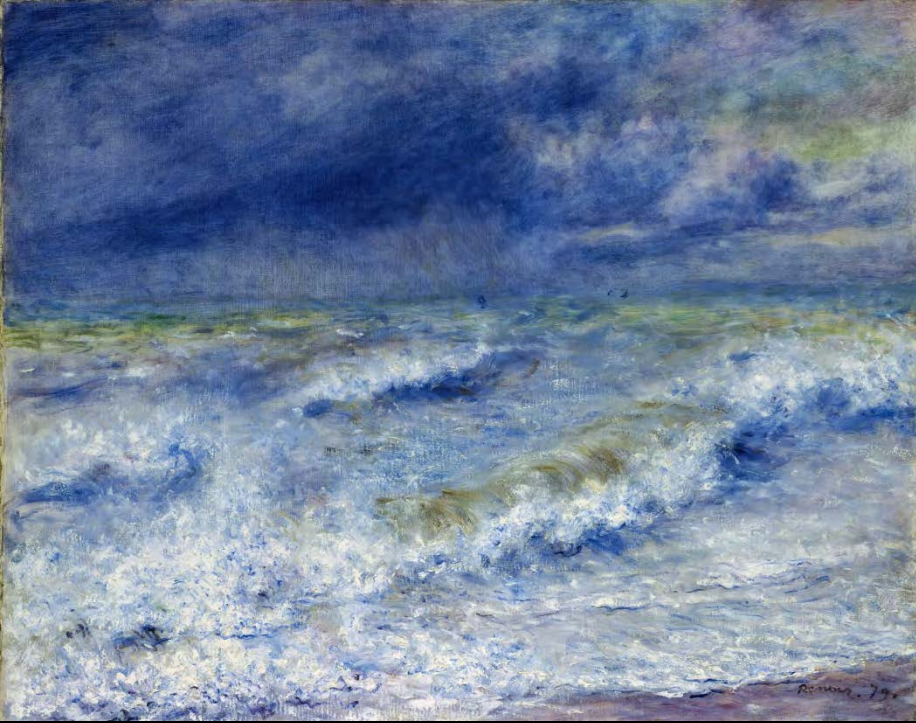


Étude de Mer, 1881



Mer agitée, 1881

Pierre Auguste Renoir. *La Vague*, 1879



Winslow Homer, *Watching the Brakers*, 1881



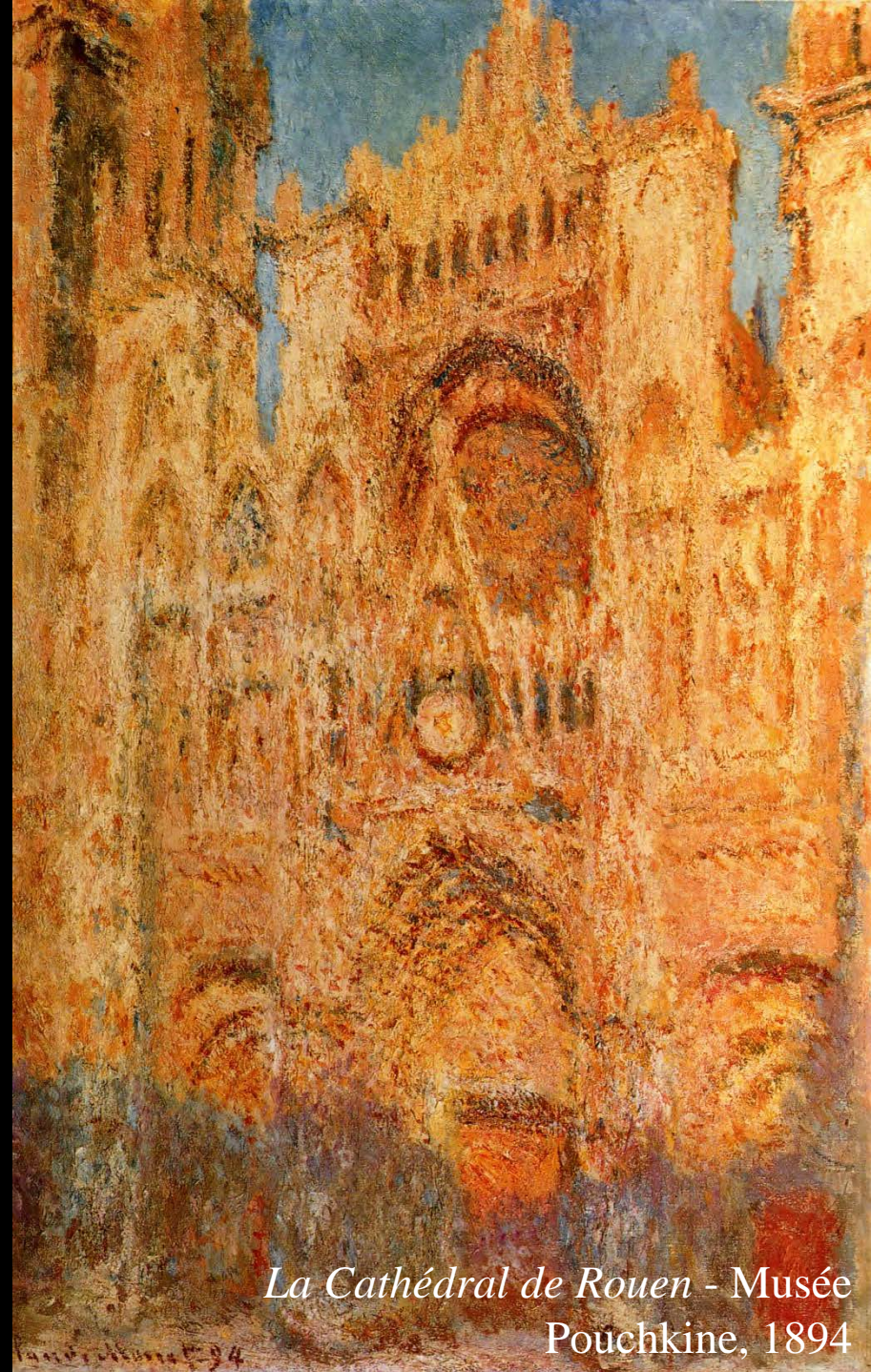
Édouard Manet. *Monet pintando em seu barco-estúdio*, 1874



Édouard Manet. *Argenteuil, les canotiers*, 1874



Le Portail (temps gris)- Musée
d'Orsay, 1894



La Cathédral de Rouen - Musée
Pouchkine, 1894



Le déjeuner sur l'herbe, 1866

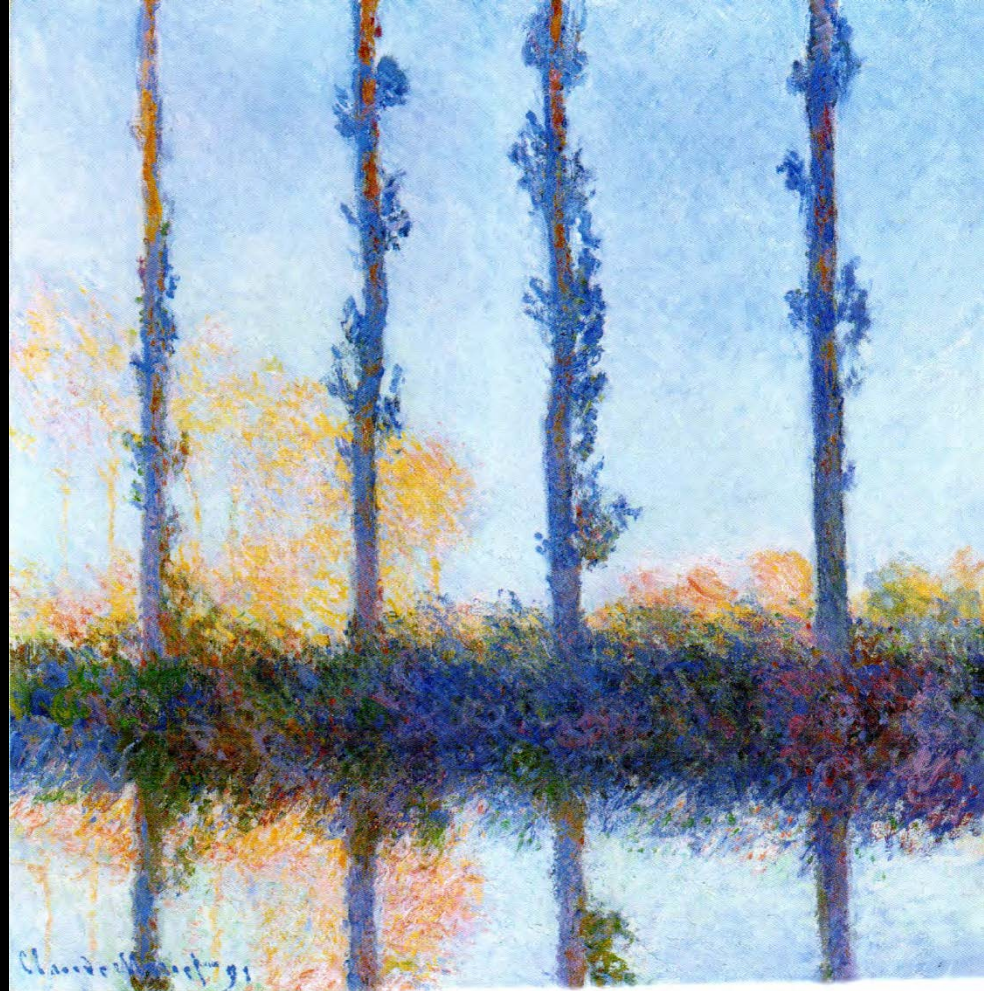
Pierre Auguste Renoir. *La balançoire*, 1876



Ralph Goings. *Sundaes and Shakes*, 1972



Sous les Citronniers, 1884



*Les Quatre Arbres - Metropolitan
Museum of Art, New York, 1891*



Paul Cézanne. *Jas de Bouffan, le bassin*, 1876c



Paul Cézanne. *Paisagem perto de Aix, a planície do rio Arc*, 1892-1895



Chaim Soutine. *Paisagem*.



Chaim Soutine. *A grande árvore*, 1942

Gustav Klimt, *O parque*, 1910



Gustav Klimt, *A floresta de Faias*, 1901-1902



Charles Burchfield.
Summer Solstice,
1961-1966





*Le printemps,
Giverny, 1900*



Camille Pissarro. Coin de village, effet d'hiver, 1877

Saule Pleureur -
Coleção Privada, 1919



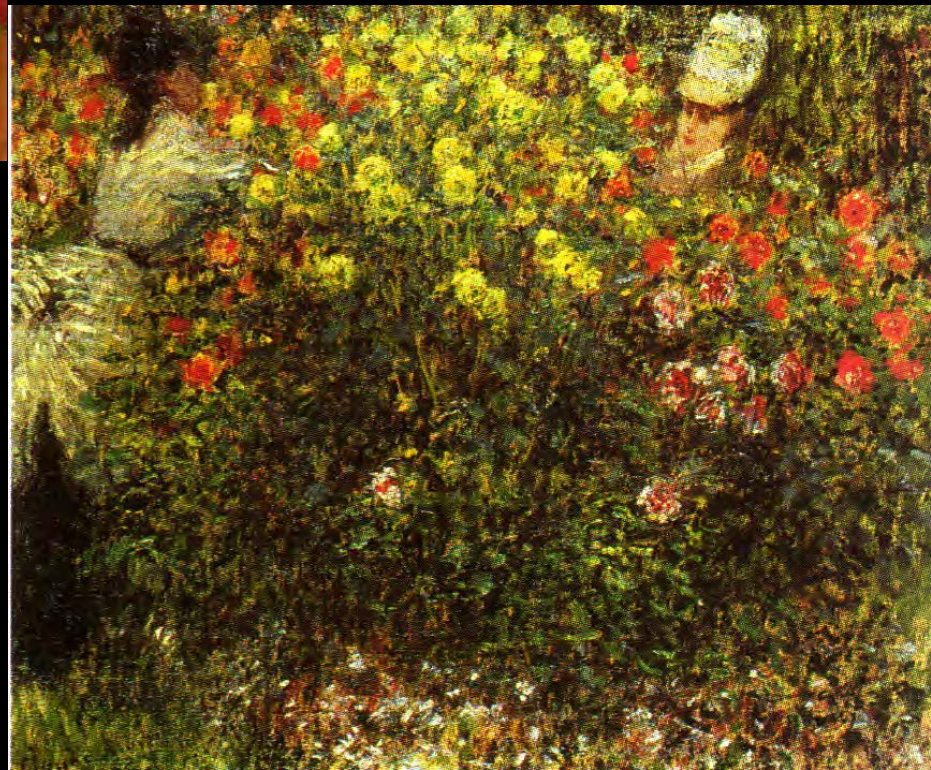


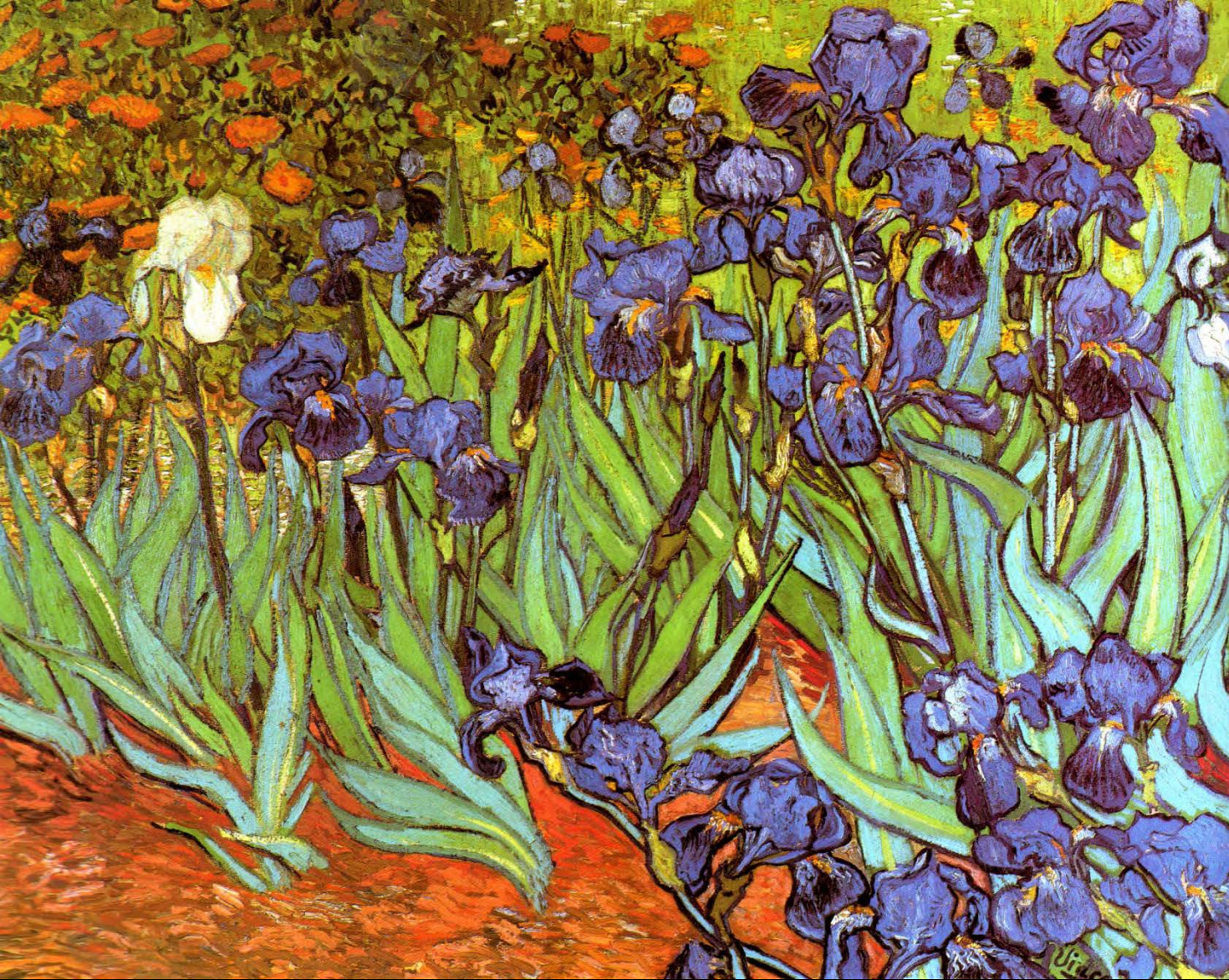
Le Jardin - 1900



Cuno Amiet. *Garota e as flores* - 1896

Jeunes Filles dans un massif de dahlias - 1875





Van Gogh. *Lírios* - 1899

*Lucien Freud. Duas
Plantas – 1977-1980*



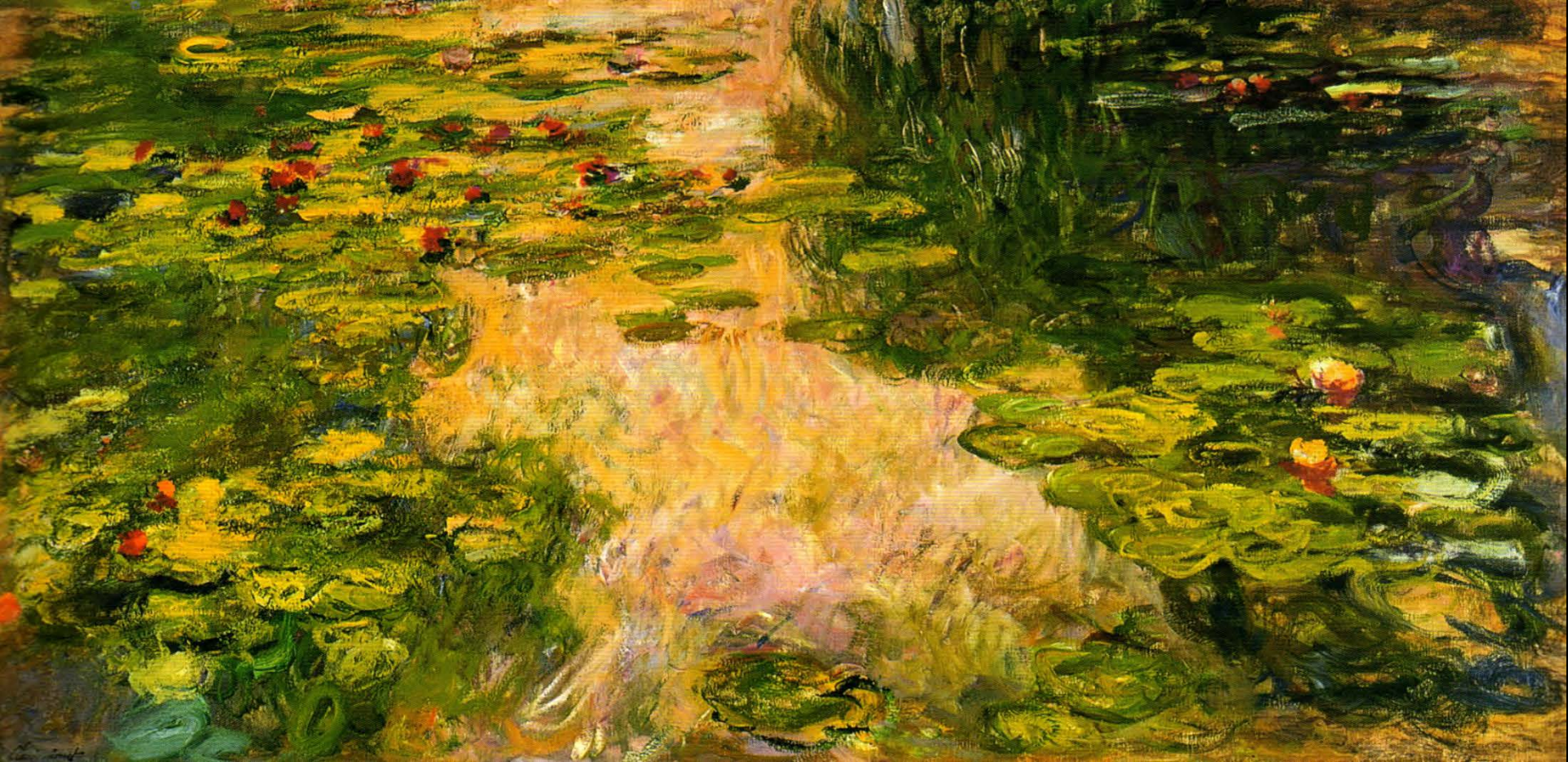


Apartamento de Paul Durand-Rouel, 1885





L'Allée des rosiers – 1920-1922



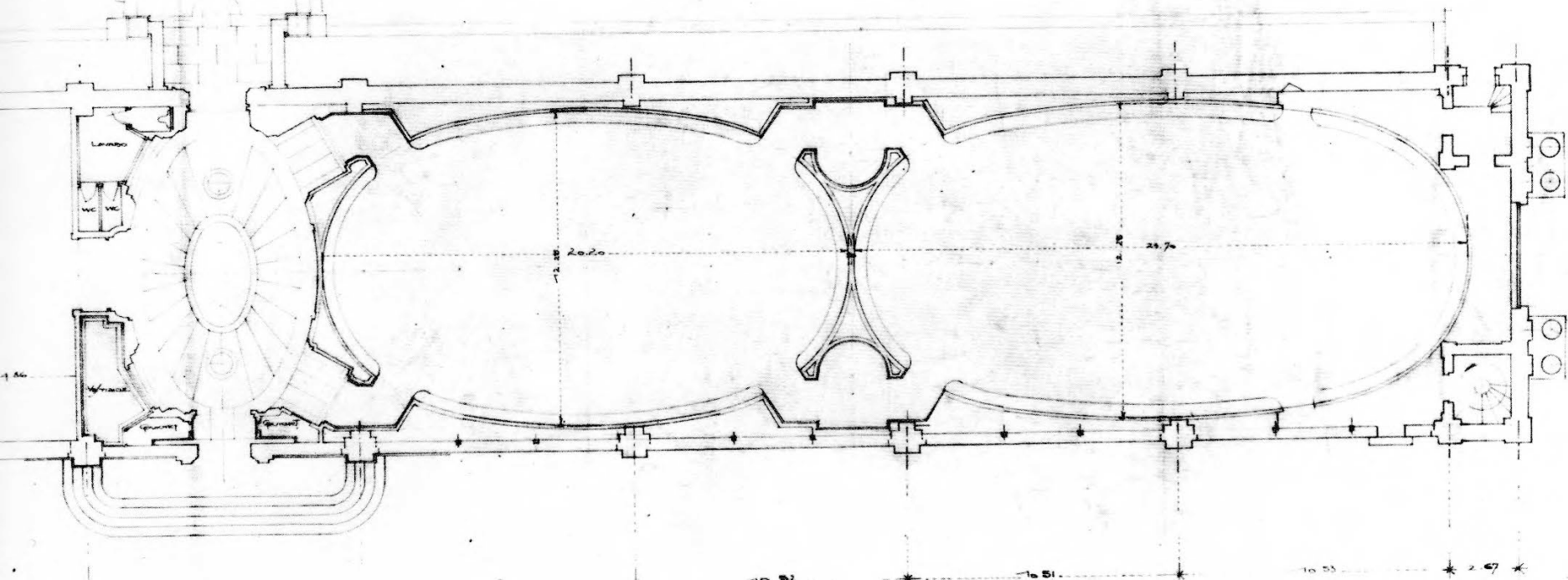
Le bassin aux Nymphéas - Honolulu Academy of Arts – Hawai, 1917-1919



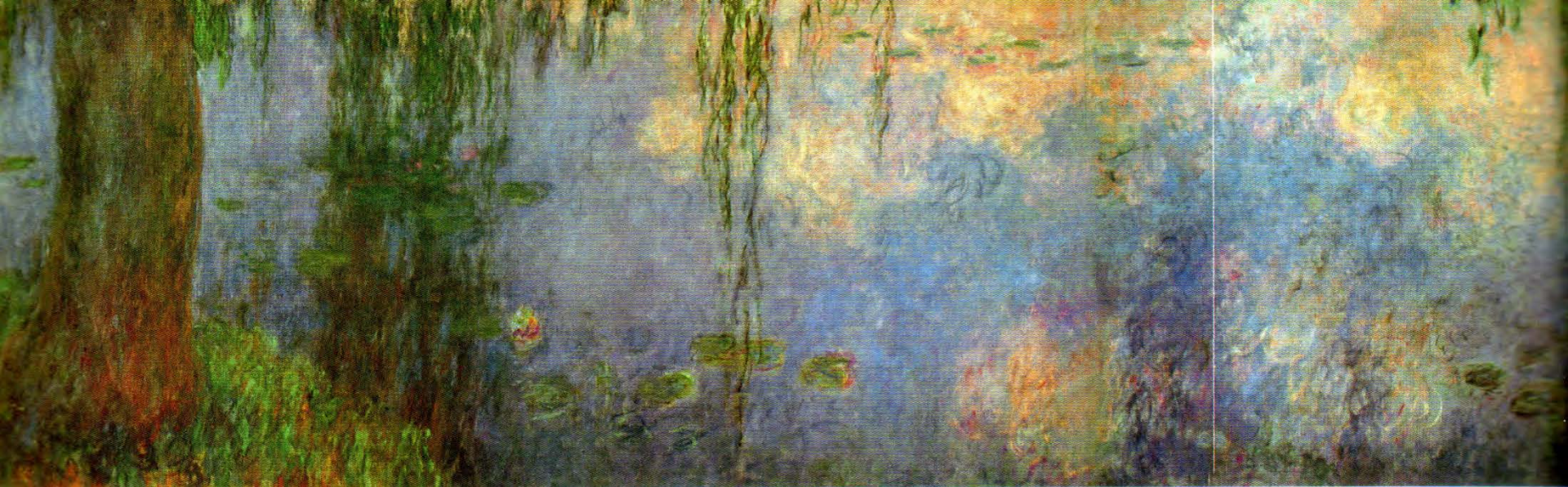
Hélio Oiticica. *Tropicália* - 1967



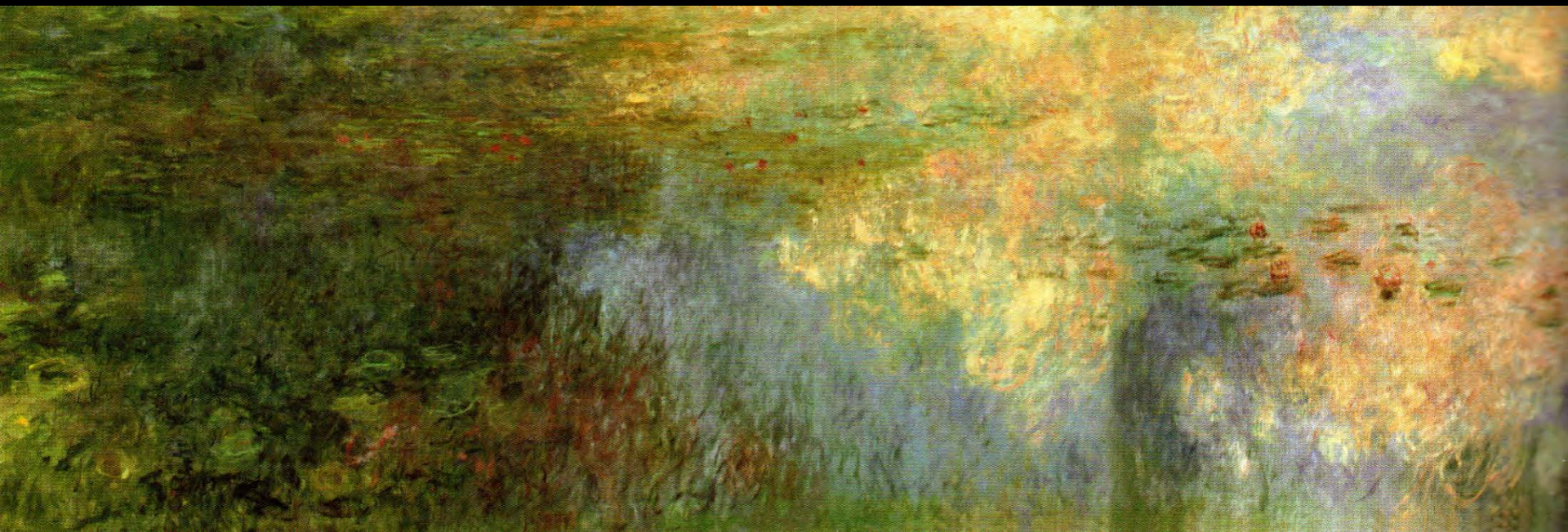
— LE/ OUVRE/ DE CLAUDE MONNET —



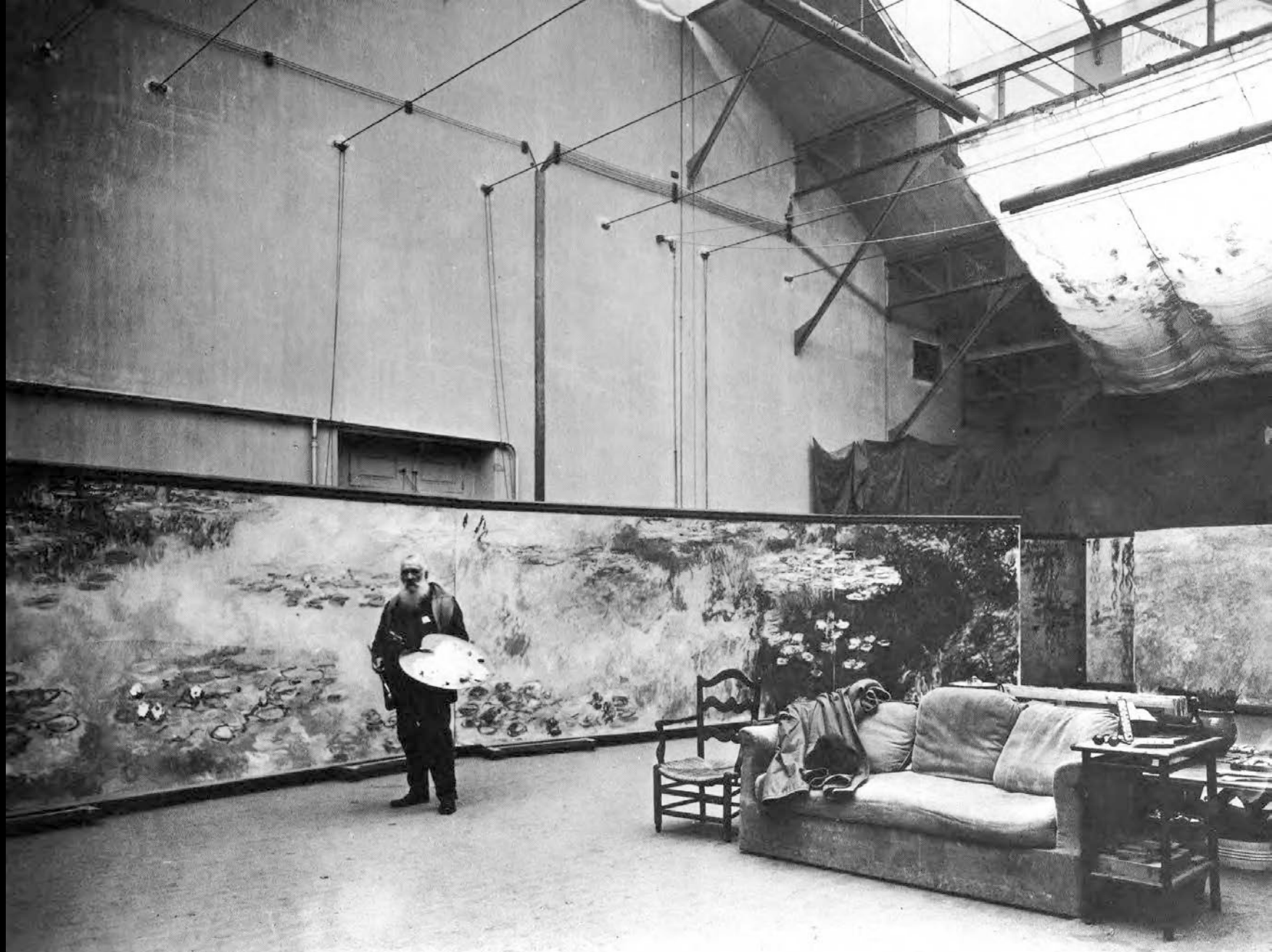
Camille Lefèvre, *Projet final para l'Orangerie*, 1927



Le Matin aux Saules. 1920-1926 (detalhe)



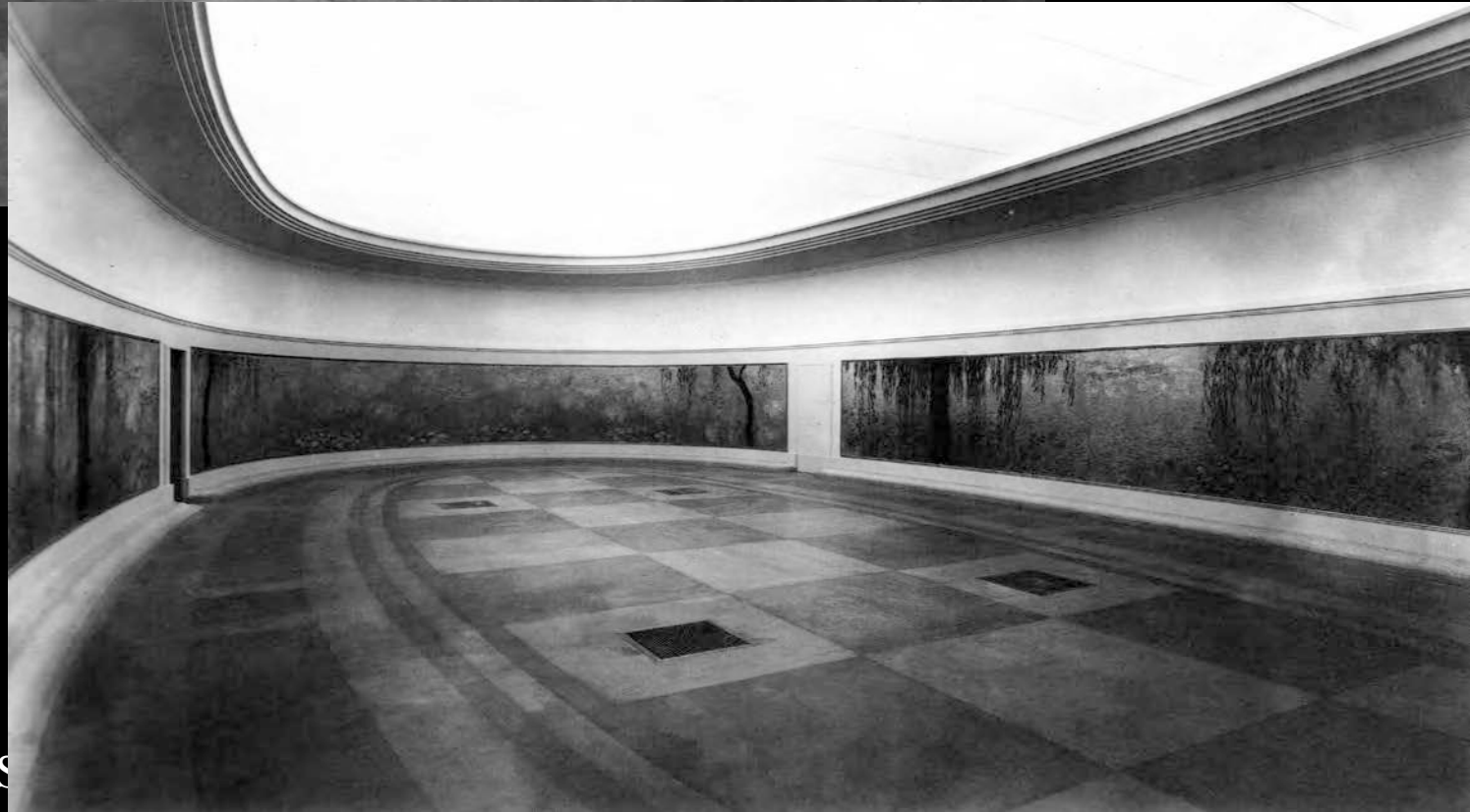
Soleil Couchant. 1920-1926 (detalhe)



Monet dans l'atelier spécialement construit pour les Nymphéas. 1923



L'Orangerie – Sala I



L'Orangerie – S







Beatriz Milhazes, *O mágico*, 2001

Beatriz Milhazes, *Paz e Amor*, 2006





Beatriz Milhazes, *Pintura*



Beatriz Milhazes, *Pintura, Colagem*, 2008



Capela Rothko, 1971